

YAMAHA
MusicSoft
Library

YAMAHA SONGBOOK

LATIN

VOLUME

1

Begin The Beguine
The Girl From Ipanema
Kiss Of Fire
Never On Sunday
So Nice
Watch What Happens
and many more

FOR USE
WITH THE
MUSICSOFT
DISK
FOR YOUR MODEL

YAMAHA SONGBOOK LATIN

Congratulations on your purchase of the Yamaha Latin Songbook, Volume 1.

Although the songs in this book may be played as you would any music, it was designed for use with the Yamaha Sequencer MusicSoft Latin Disk, Volume 1 or the Yamaha Sequencer MusicSoft Data Tape, Volume 1.

The Yamaha MusicSoft Disks and Data Tapes provide preprogrammed accompaniments including registration changes, rhythm changes and chord changes for each song in this book.

Make sure you purchase the Yamaha Sequencer MusicSoft Latin Disk, Volume 1 or Yamaha Sequencer MusicSoft Latin Data Tape, Volume 1 that corresponds to the model of your Yamaha keyboard.

Enjoy your new Book!

CONTENTS

SONG NUMBER	TITLE	PAGE
1	Breeze And I, The	2
2	Desafinado	4
3	Begin The Beguine	6
4	Girl From Ipanema, The	11
5	Kiss Of Fire	14
6	Little Boat	18
7	Man And A Woman, A	21
8	Meditation	24
9	Never On Sunday	26
10	Orchids In The Moonlight	30
11	Poinciana	33
12	Quando, Quando, Quando	36
13	Quiet Nights Of Quiet Stars	39
14	So Nice	42
15	Watch What Happens	44
16	Tango Of Roses	46

The Breeze And I

Song Select No. 1

Automatic Introduction

Words by Al Stillman
Music by Ernesto Lecuona

N.C. **G**

The breeze and I are

Fm

say - ing with a sigh that you

G

no long - er care. The breeze and

Fm

I are whis - per - ing good - bye to dreams

G **Am**

we used to share. Ours was a

love song that seemed con - stant as the moon, end - ing in a

strange, mourn - ful tune.

And all a - bout me they know you have de -

part - ed with - out me and we won - der

part - ed with - out me and we won - der

Desafinado

(Slightly Out Of Tune)

English Words by Jon Hendricks and Jessie Cavanaugh
Original Words by Newton Mendonca
Music by Antonio Carlos Jobim

Song Select No. 2

Automatic Introduction

4/4

Love is like a
Tune your heart to

D7

nev - er - end - ing - mel - o - dy,
mine the way it used to be,

Dm7 G7 A7

To Coda

Po - ets have com - pared it to a sym - pho - ny,
Join with me in har - mo - ny and

Dm E7 A7

A sym - pho - ny con - duct - ed by the light - ing of the

D7

moon, But our song of love is slight - ly

D.S. al Coda
(Return to beginning
Play to Φ and
skip to Coda)

CODA

Fm **G7** **Gm**

out of tune _____ sing a song of

A7 **Dm7** **Fm** **C**

lov - ing, we're bound to get in tune a - gain be - fore too

Am **D7**

long. There'll be no de - sa - fi - na - do when your heart be -

Fm **N.C.** **Dm7**

longs to me com - plete - ly. _____ Then you won't be slight - ly out of tune _____

G7 **C**

Begin The Beguine

Words and Music by
Cole Porter

Song Select No. 3

Automatic Introduction

C

When they be - gin _____

the be - guine _____ it brings back the sound _____

G7

of mu - sic so ten - der. It _____

Dm

brings back a night _____ of trop - i - cal splen - dour. _____

G7

It brings back a mem - o - ry ev - er

C**Cm**

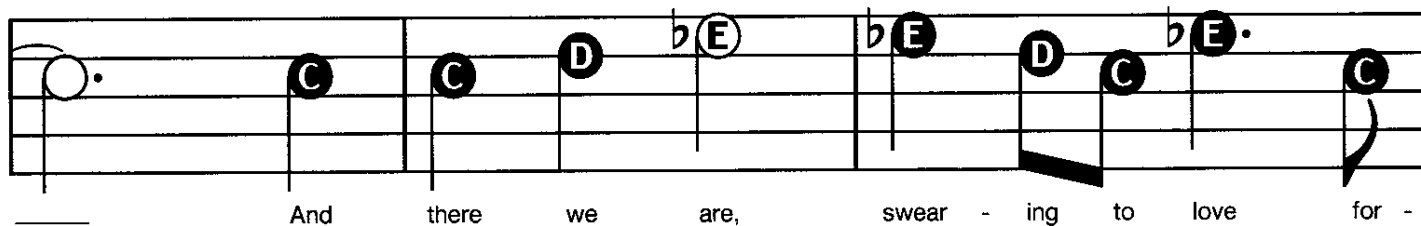
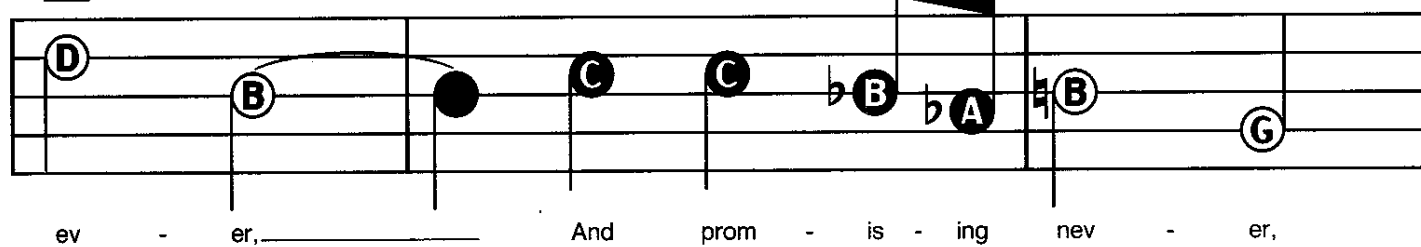
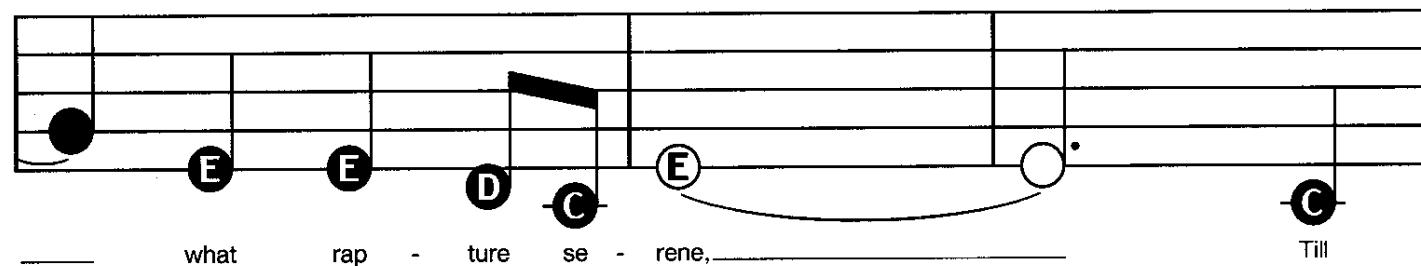
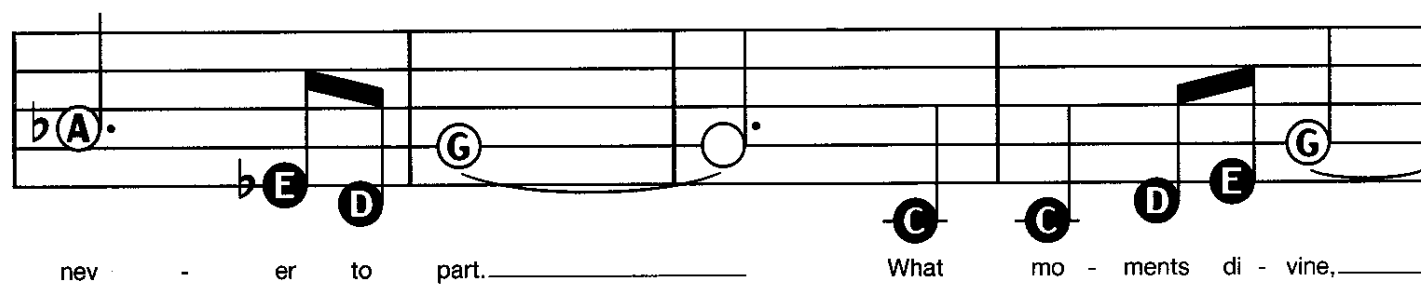
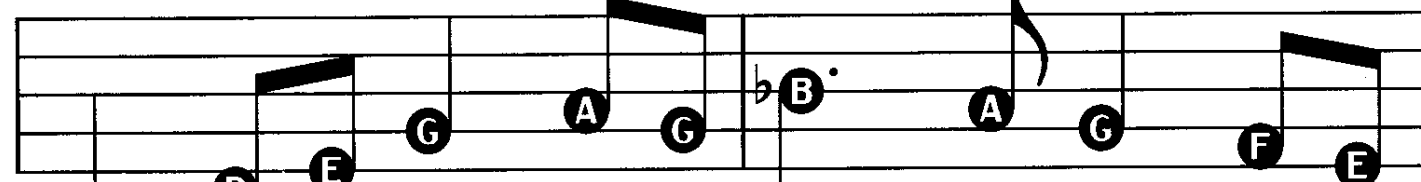
green. To live it a - gain

F7**Bb**

is past all en - deav - our, Ex -

Bbm**Eb7****Ab**

is past all en - deav - our, Ex -

F#dim**G****A^b****G****Fm****G****C****C#dim**

G7 **Fm**

tast - ed _____ And now when I hear peo - ple

curse the chance that was wast - ed, _____ I

G7 **C**

know but too well _____ what they mean; _____

Oh yes let them be - gin the be - guine, make them

play _____ Till the stars that were there be -

G7

fore re - turn a - bove you, _____ Till you

F

whis - per to me once more, "Dar - ling, I

Em **A7** **Dm**

love you." _____ And we sud - den - ly know _____

Fm

_____ what heav - en we're in. _____

G7 **C**

The Girl From Ipanema

(Garota De Ipanema)

Song Select No. 4

Automatic Introduction

Original Words by Vinicius De Moraes

English Words by Norman Gimbel

Music by Antonio Carlos Jobim

F

Tall and tan and

G7

young and love hand - ly some, the the girl boy from I - pa -

Gm

ne - ma goes walk - ing and when she pass pass - es, each

he he pass pass - es, each

Gb7 **F** **Gb7**

one girl she he pass - es goes "aah!"

F **G7**

when she he walks walk's she's he's like a sam - ba that swings so cool and

Gm

sways so gen - tle, that when {she he} pass pass - es es each each

G \flat 7

F

one girl she {he} pass - es goes "aah!"

G \flat

B

Oh but I watch {her him} so sad - ly.

F \sharp m

D7

How can I tell {her him} I love {her? him?}

Gm

E \flat 7

Yes, I would give my heart glad - ly, but each

Am **D7** **Gm**

day when {she
he} walks to the sea, {she
he} looks straight a - head not at

C7 **F**

me. Tall and tan and young and {love
hand - ly the
- some, the

G7 **Gm**

girl
boy} from I - pa - ne - ma goes walk - ing and when {she
he} pass - es I

C7 **F** **Gb7**

smile, but {she
he} does - n't see. {She
He} just does - n't

F **Gb7** **F**

Kiss Of Fire

Words and Music by Lester Allen and Robert Hill
(Adapted from A.G. Villoldo)

Song Select No. 5

Automatic Introduction

N.C.

Dm

I touch your lips and all at once the sparks go

fly - ing. Those dev - il lips that know so well the art of

A7

ly - ing, and tho' I see the dan - ger, still the flame grows

high - er. I know I must sur - ren - der to your kiss of

Dm

fire. Just like a torch, you set the soul with - in me

The first staff of music is in D minor. It begins with a whole note E on the first line, followed by a whole note D on the second line. After a bar line, there is a half note A on the second space, a half note A on the second space, a half note B-flat on the second space, a half note B-flat on the second space, a half note A on the second space, a half note A on the second space, a half note D on the second line, a half note D on the second line, a half note F on the second space, a half note F on the second space, and a half note B-flat on the second space.

D7

burn - ing. I must go on a - long this road of no re -

The second staff of music is in D7. It begins with a half note B-flat on the second space, a half note A on the second space, a half note A on the second space, a half note D on the second line, a half note D on the second line, a half note A on the second space, a half note A on the second space, a half note F-sharp on the second space, a half note F-sharp on the second space, a half note A on the second space, a half note A on the second space, and a half note C on the second space.

Gm

turn - ing, and tho' it burns me and it turns me in - to

The third staff of music is in G minor. It begins with a half note C on the first space, a half note B-flat on the second space, a half note B-flat on the second space, a half note B-flat on the second space, a half note B-flat on the second space, a half note A on the second space, a half note A on the second space, a half note G on the second space, a half note G on the second space, a half note F on the second space, a half note F on the second space, and a half note E on the second space.

Dm**A**

The fourth staff of music is in D minor. It begins with a half note E on the first line, a half note D on the second line, a half note F on the second space, a half note E on the second space, a half note D on the second line, a half note D on the second line, a half note C-sharp on the second space, a half note E on the second space, a half note G on the second space, a half note G on the second space, a half note F on the second space, and a half note E on the second space.

Dm **N.C.** **C7**

fire. I can't re - sist you. What good is there in

F **C7**

try - ing; what good is there de - ny - ing? You're all that I de -

F **A7**

sire. Since first I kissed you, my heart was yours com -

Dm **Bb**

A **B \flat** **A** **B \flat** **A**

be. Don't pi - ty me! Don't pi - ty me!

Dm

Give me your lips, the lips you on - ly let me

D7

bor - row. Love me to - night and let the dev - il take to -

Gm

mor - row. I know that I must have your kiss al - though it

Dm **A7** **Dm**

Little Boat

(O Barquinho)

Song Select No. 6
Automatic Introduction

Original Words by Ronaldo Boscoli
English Words by Buddy Kaye
Music by Roberto Menescal

C

My lit - tle boat is

F#m7

like a note bounc - ing mer - ri - ly a - long hear it

B7 **Bb**

splash - in' up a song. The sails are white, the

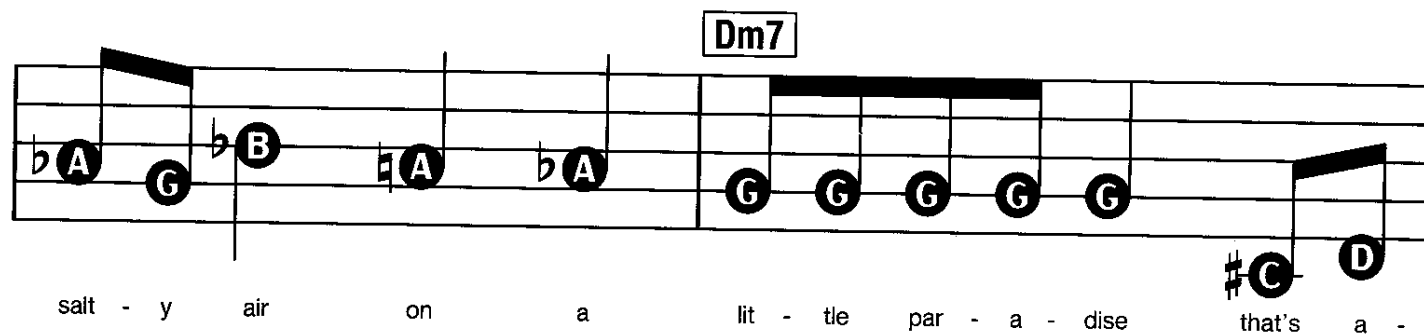
Em7

sky is bright head - in' out in - to the blue with a

A7 **Ab**

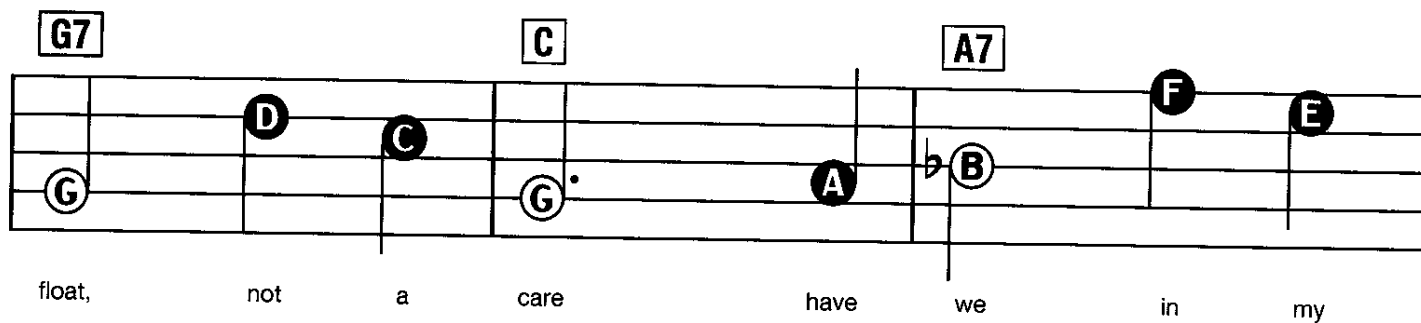
crew of on - ly two. Where we can share love's

Dm7



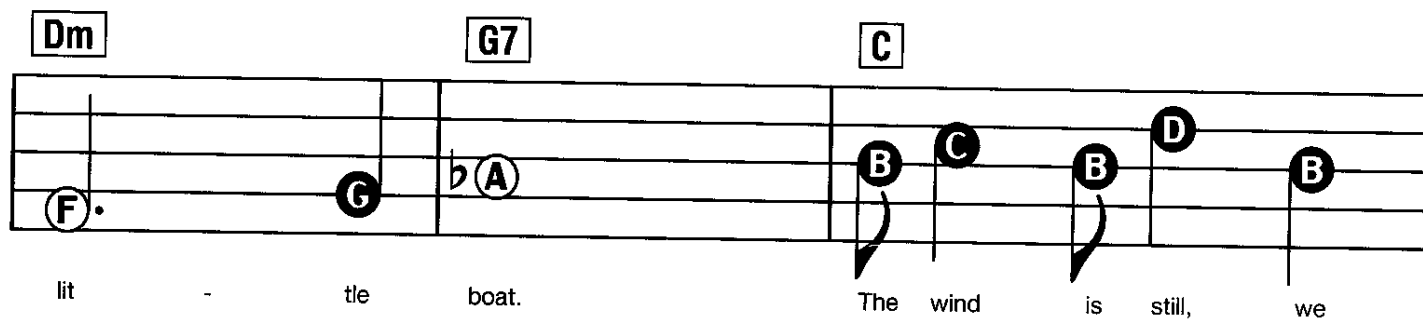
salt - y air on a lit - tle par - a - dise that's a -

G7 **C** **A7**



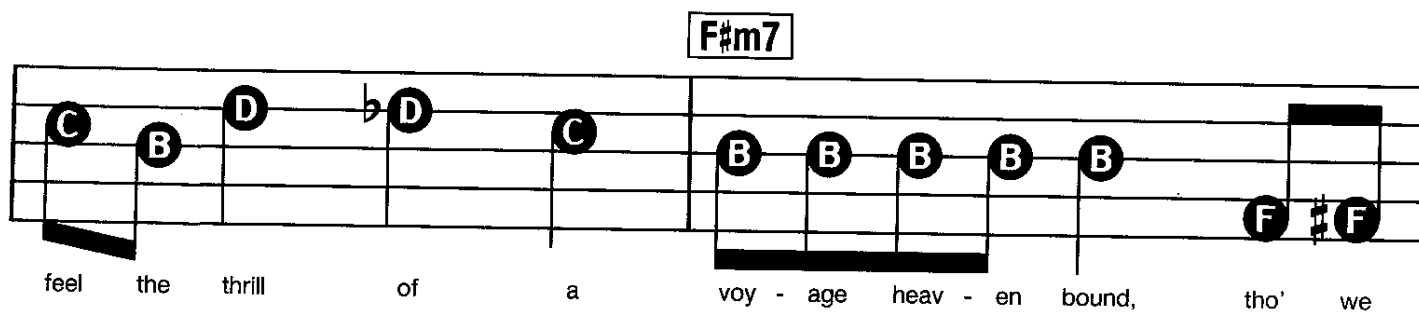
float, not a care have we in my

Dm **G7** **C**



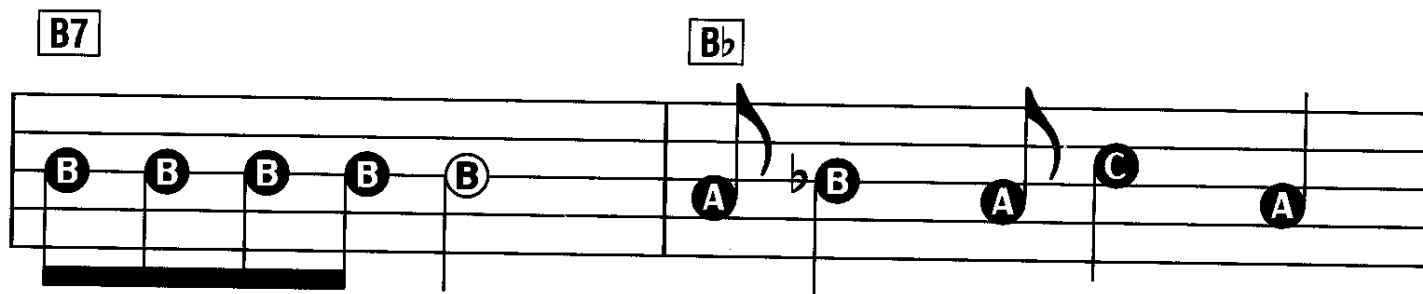
lit - tle boat. The wind is still, we

F#m7



feel the thrill of a voy - age heav - en bound, tho' we

B7 **Bb**



Em7

hearts as one beat - ing with en - chant - ed bliss. Melt - ing

A7 **A^b**

in each oth - er's kiss. When day - light ends and

Dm7

sly - ly sends lit - tle stars to twin - kle bright - ly a -

G7 **C** **A7**

bove, it's good - bye to me lit - tle

Dm **G7** **C**

boat of love.

A Man And A Woman

(Un Homme Et Une Femme)

Song Select No. 7

Automatic Introduction

Original Words by Pierre Barouh

English Words by Jerry Keller

Music by Francis Lai

N.C. $\frac{3}{4}$ **C**

When hearts are pass - ing in the night, In the
pass - ing in the night, In the

lone - ly night
rush - ing night

Then A they man, must a

B7

hold each oth - er tight,
wo - man in the night,

Oh in so the ver - y tight
night

Bb

And Must take a chance that in the light, In to -
Must take a chance that in the light, In to -

Em7

mor - row's light
mor - row's light

They'll stay to - geth - er
They'll stay to - geth - er

A7 **To Coda** **D** **N.C.** **Cm**

So much in love. Tho' yes - ter - day

F7 **Bb** **Cm**

still sur - rounds you With a warm and

F7 **Bb** **Em7**

pre - cious mem - o - ry. May - be

A7 **D**

for to - mor - row we can build a

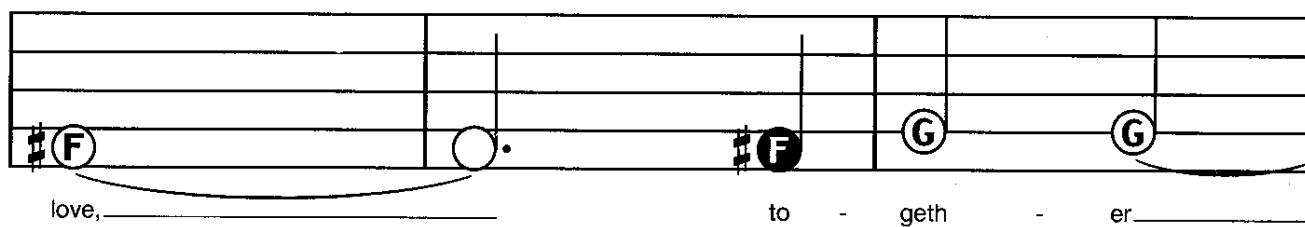
Dm **G7** **C**

D.S. al Coda
(Return to §
Play to C and
skip to Coda)

CODA



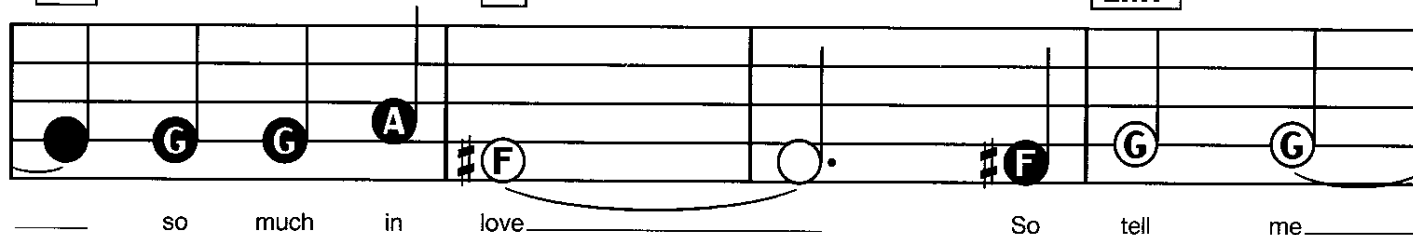
Em7



A7

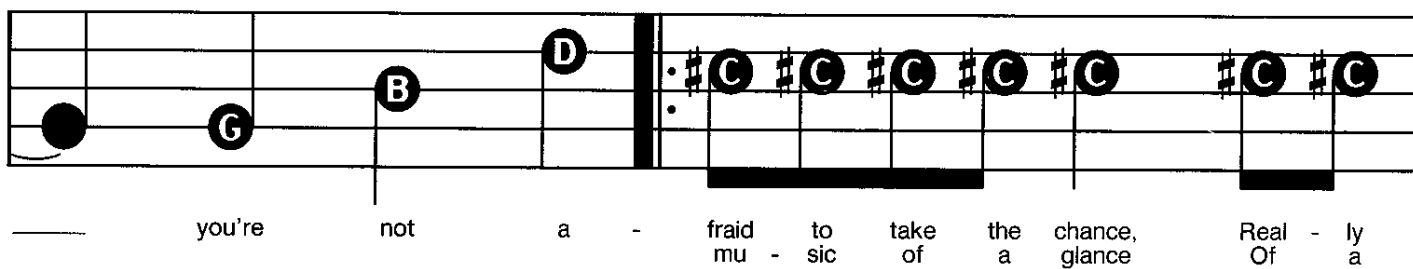
D

Em7

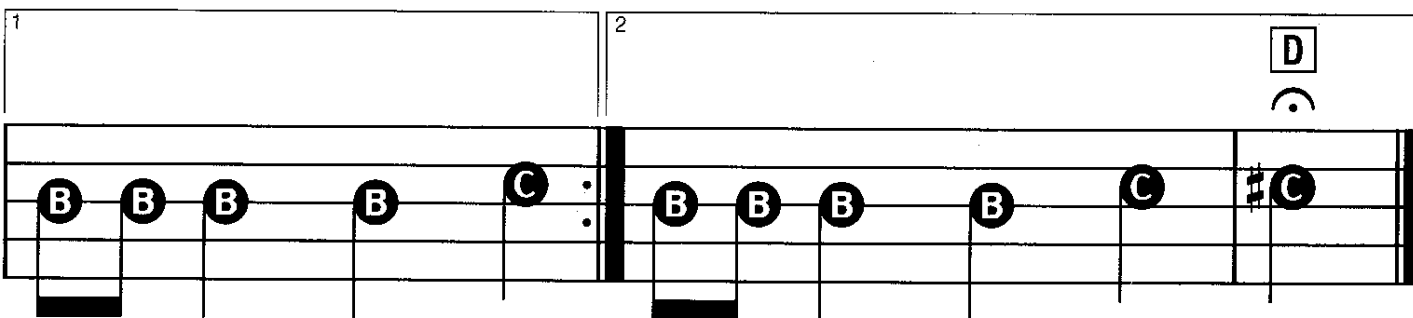
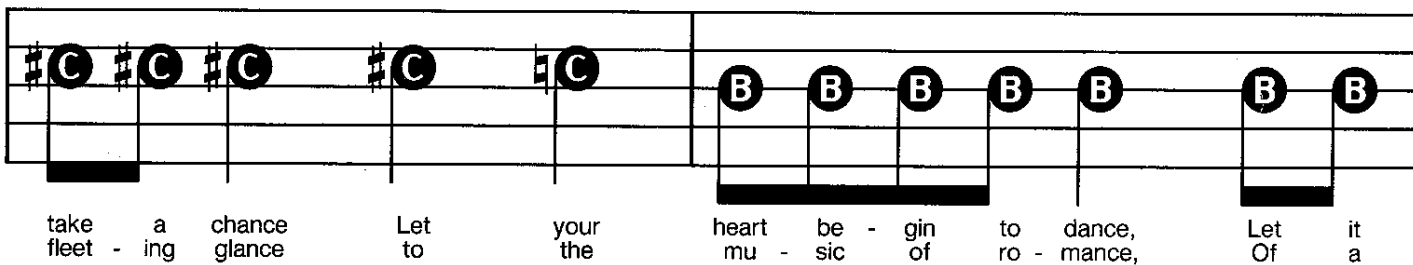


A7

D



C



Meditation

Song Select No. 8

Automatic Introduction

English Words by Norman Gimbel
Original Words by Newton Mendonca
Music by Antonio Carlos Jobim

4/4

F

In _____ my will

E7 **F**

lone - li - ness _____
wait for you _____

When you're gone and I'm all by my - self _____
'til the sun falls from out the sky _____

Am7 **D7**

_____ and for I _____ need else your ca - res. _____
_____ do? _____

Gm7 **Bbm** To Coda

_____ just will think of for you _____ and the
_____ Me - di -

Am **D7**

thought of you hold - ing me near makes my

Gm7 **C7** **Bb**

lone - li - ness soon _____ dis - ap - pear. Yes, _____

Bbm

_____ I love you so _____ and

Am7 **Abdim**

that for me _____ is all I need _____ to

Gm7 **C7** **D.S. al Coda**
(Return to beginning
Play to ♯ and
skip to Coda)

know _____

CODA
Am7 **D7**

ta - ting how sweet _____ life will

Gm7 **C7** **F**

be when you come _____ back to me. _____

Never On Sunday

(From Jules Dassin's Motion Picture "NEVER ON SUNDAY")

Song Select No. 9

Automatic Introduction

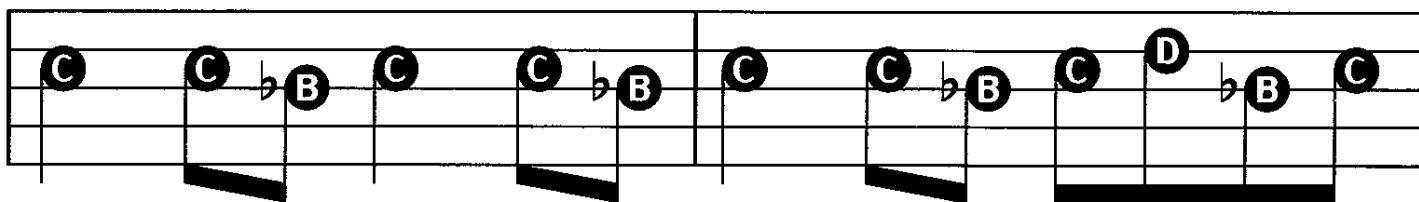
Words by Billy Towne
Music by Manos Hadjidakis

N.C.



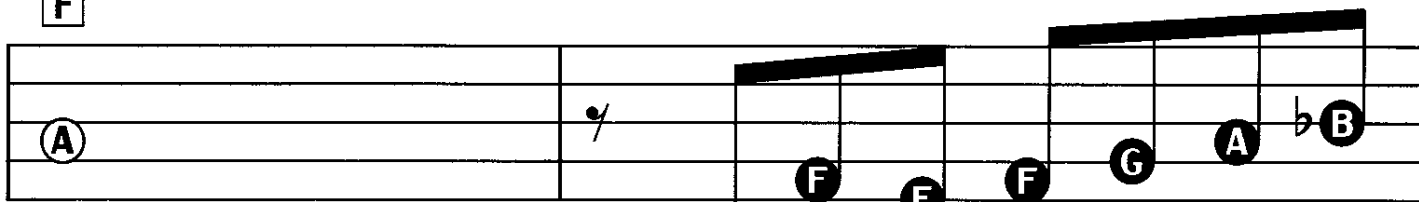
Oh, you can kiss me on a

C7



Mon - day, a Mon - day, a Mon - day is ver - y, ver - y

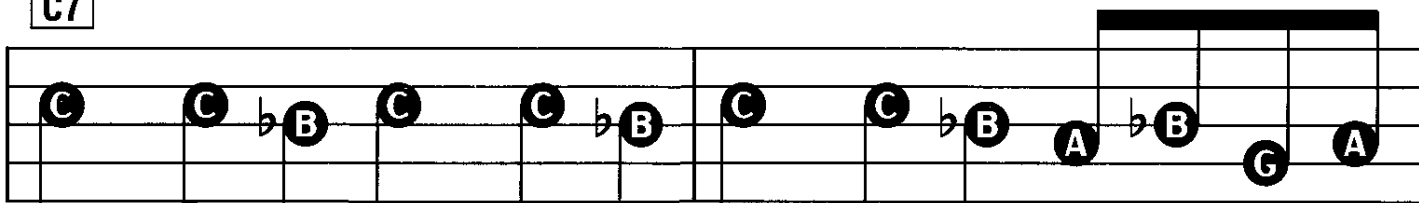
F



good.

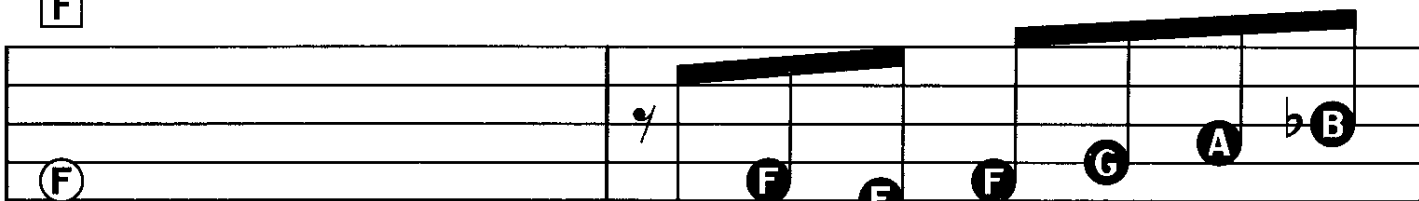
Or you can kiss me on a

C7



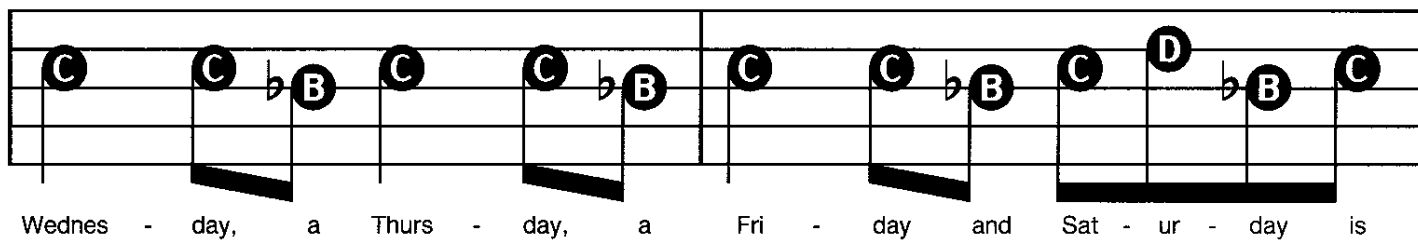
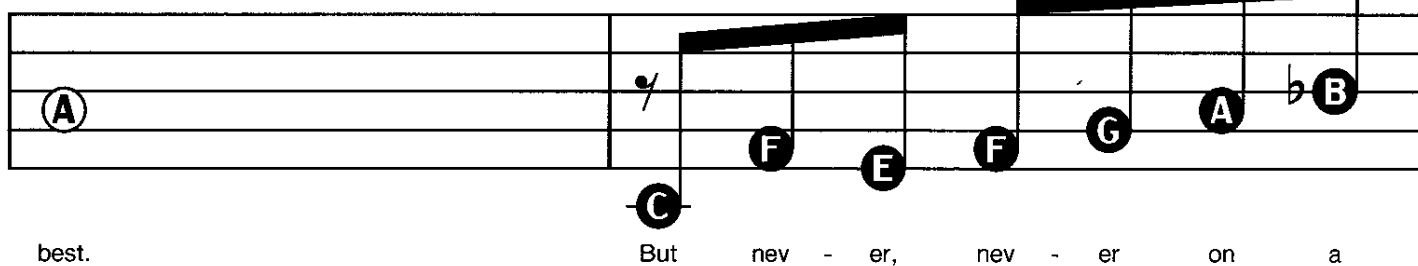
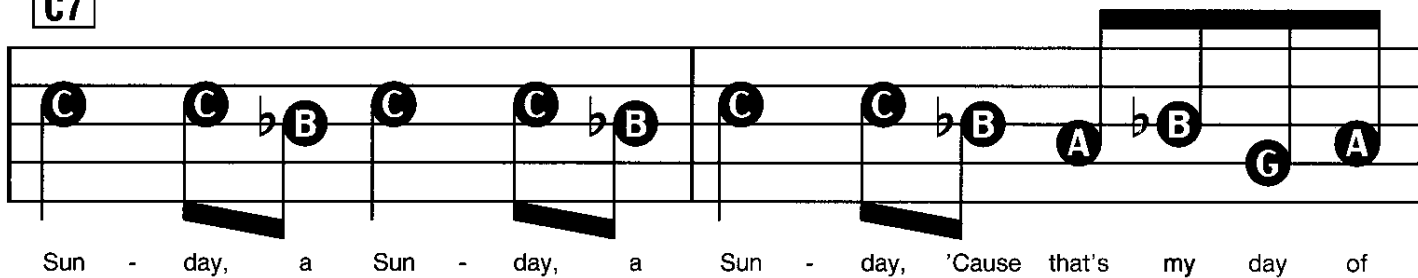
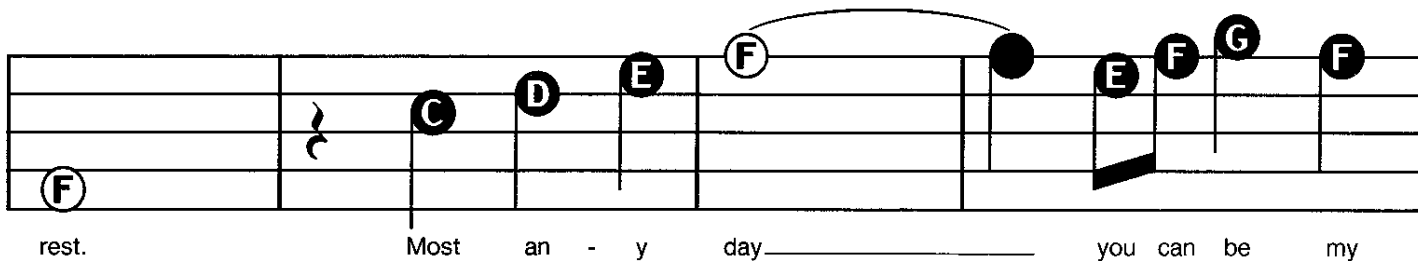
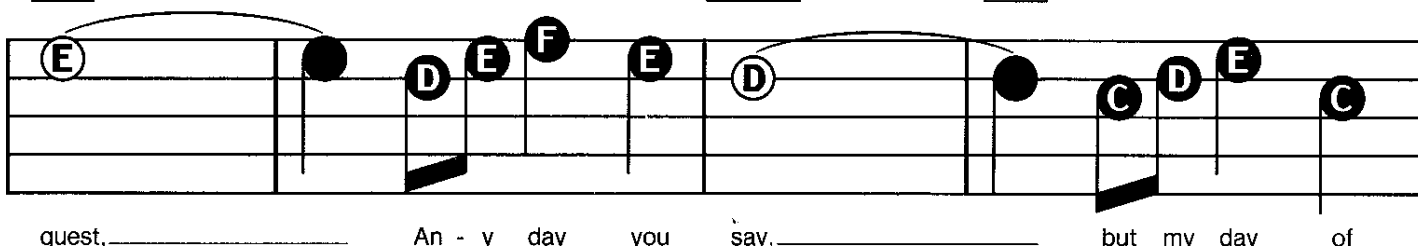
Tues - day, a Tues - day, a Tues - day, In fact I wish you

F



would.

Or you can kiss me on a

C7**F****C7****F****C7****F****C7****Gm7****C7**

F **C7** **F**

rest. Just name the day _____ that you like the

C7 **Gm7** **C7**

best. _____ On - ly stay a - way _____ on my day of

F N.C.

rest. Oh, you can kiss me on a

C7

cool day, a hot day, a wet day, which - ev - er one you

F

C7

gray day, a May day, a pay day, and see if I re -

F

fuse. And if you make it on a

C7**F**

bleak day, a freak day, a week - day, why you can be my guest.

C7

But nev - er, nev - er on a Sun - day, a Sun - day, the

F

Orchids In The Moonlight

Words by Gus Kahn and Edward Eliscu
Music by Vincent Youmans

Song Select No. 10 Automatic Introduction

Am

When or - chids bloom in the

F Am E7

moon - light and lov - ers vow to be true,

Dm E7

I still can dream in the moon - light

Am

of one dear night that we knew.

When or - chids fade in the dawn - ing, _____

_____ they speak of tears and "good - bye!" _____

_____ Tho' my dreams _____ 'are shat - tered Like the pet - als scat - tered, _____

Still my love _____ can nev - er die. Fine

E7 **C#m**

thru, _____ but the shad - ows that fall on - ly seem to re -

Bm **E7** **A** **N.C.**

call all my long - ing for you. There's a dream in the

A **A7** **D**

moon - beams _____ up - on the sea of blue, _____

E7 **F7**

_____ but the moon - beams that fall on - ly seem to re -

A **E7** **A**

D.S. al Fine
(Return to §
Play to Fine)

Poinciana

(Song Of The Tree)

Words by Buddy Bernier
Music by Nat Simon

Song Select No. 11

Automatic Introduction

4/4

N.C. C

Poin - ci - an - a,

Gm C7 Fm

your branch - es speak to me of love. _____ Pale moon

C

is cast - ing shad - ows from a - bove. _____

Fm

Love is ev - 'ry - where, its mag - ic per - fume fills the

G **Fm**

air, _____ To and fro you sway, my

G

heart's in time, I've learned to care. _____ Poin - ci -

C

an - a though skies may turn from blue to

Gm **C7** **Fm**

gray. _____ My love

will live for - ev - er and a day. _____

G7

Blow _____ trop - ic wind, _____ Sing a

song _____ thru the tree. _____

G7

Tree _____ sigh to me. _____ Soon my

C

love _____ I will see. _____ Poin - ci -

D.S. al Fine
(Return to beginning Play to Fine)
N.C.

Quando, Quando, Quando

(Tell Me When)

Italian Words by A. Testa
English Words by Pat Boone
Music by Tony Renis

Song Select No. 12

Automatic Introduction

N.C.

Tell me when will you be

Dm7

G7

mine. Tell me quand - do, quan - do,

C

C#dim

quan - do. We can share a love di -

Dm7

G7

vine, Please don't make me wait a -

C**N.C.**

gain. _____ Ev - 'ry mo - ment's a

Gm7**C7**

day. _____ Ev - 'ry day seems a

F

life - time. _____ Let me show you the

Am7**D7**

way, _____ to a joy be - yond com -

Dm7 **G7** N.C.

pare. _____ I can't wait a mo - ment

Dm7 **G7**

more, _____ Tell me quan - do, quan - do,

C **C#dim**

quan - do. _____ Say it's me that you a -

Dm7 **G7**

dore, _____ and then dar - ling tell me

C

when _____

Quiet Nights Of Quiet Stars

(Corcovado)

English Words by Gene Lees
Original Words and Music by Antonio Carlos Jobim

Song Select No. 13

Automatic Introduction

D7

Qui - et nights of

Abdim

qui - et stars, _____

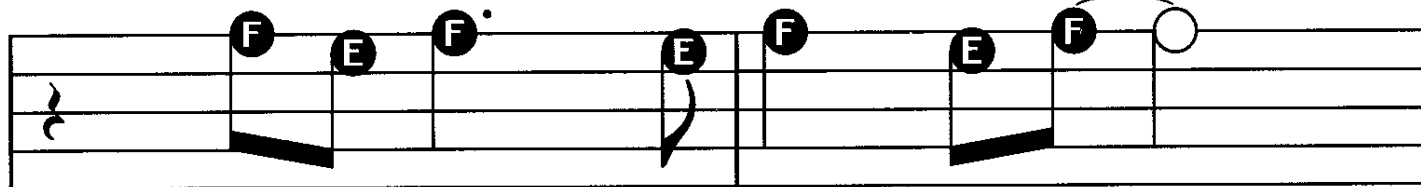
qui - et chords from my gui - tar _____

Gm7 **C7** **F**

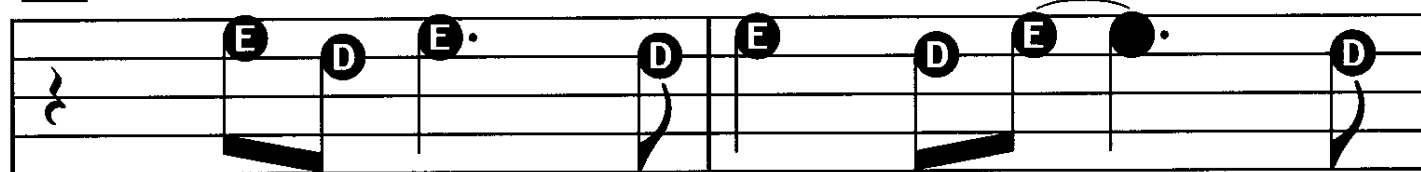
float - ing on a si - lence that sur - rounds us. _____

Fm

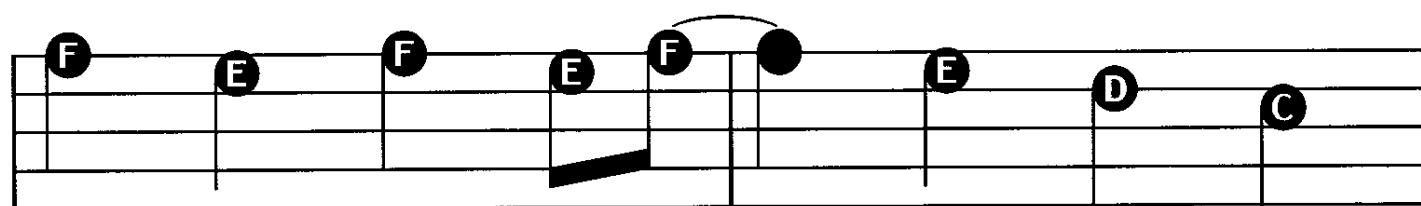
_____ Qui - et thoughts and qui - et dreams, _____

Em7

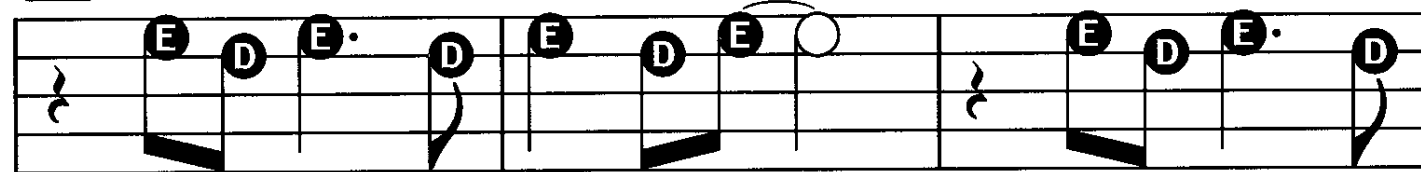
qui - et walks and qui - et streams, ____

A7**D7**

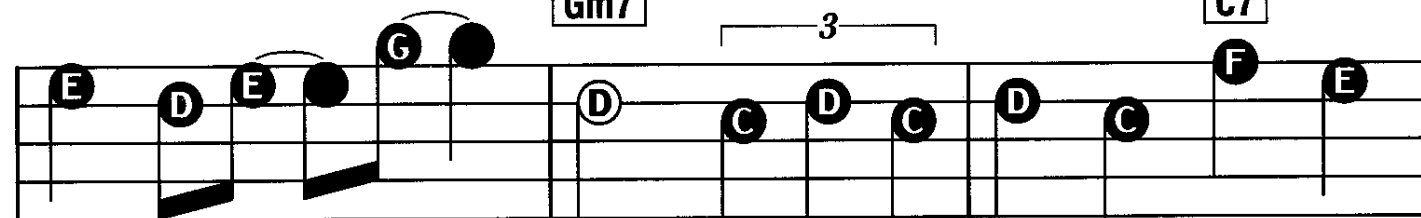
and a win - dow look - ing on _____ the

Dm**G7**

moun - tains and the sea. _____ How love - ly!

D7**Abdim**

This is where I want to be. _____ Here, with you so

Gm7**C7**

close to me. _____ un - til the fin - al flick - er of life's

em - ber. _____ I, who _____ was lost and

lone - ly, _____ be - liev - ing life was on - ly _____

a bit - ter, tra - gic joke, have found with

you _____ the mean - ing of ex -

So Nice

(Summer Samba)

Original Words and Music by Marcos Valle and Paulo Sergio Valle
English Words by Norman Gimbel

Song Select No. 14

Automatic Introduction

F

Some - one to hold me tight,
Some - one to cling to me,

Bm7

that would be ve - ry nice,
right or wrong, Some - one to love sing me right,
Some - one to me

E7

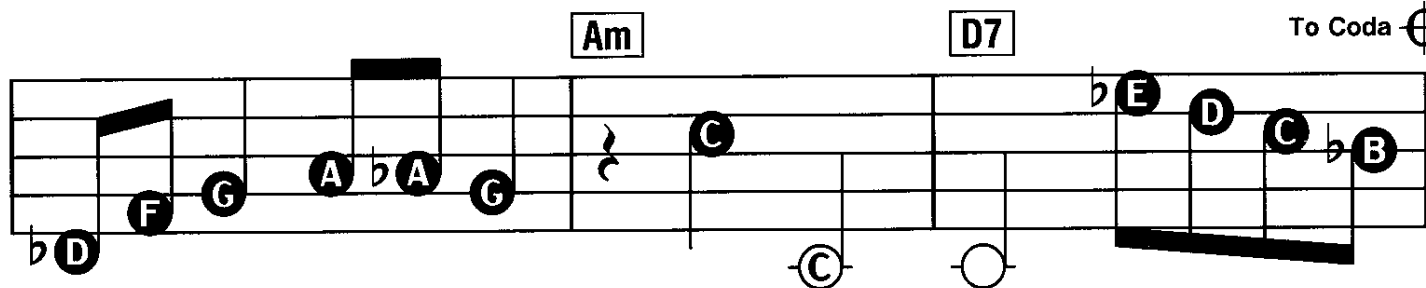
Bb

that would be ve - ry nice. Some - one to un - der - stand,
some lit - tle sam - ba song. Some - one to take my heart,

Eb7

each lit - tle dream in to me,
then give his heart to me. Some - one to who's take my hand,
read - y to

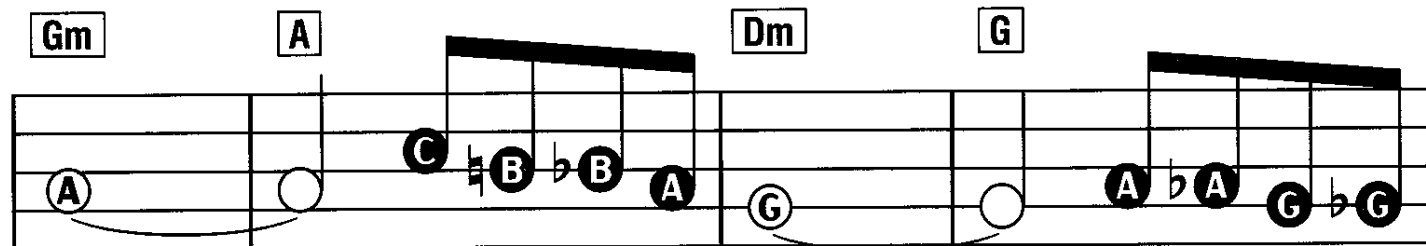
To Coda



to be a team with me.
give love a start with me.


So nice, _____
Oh yes, _____

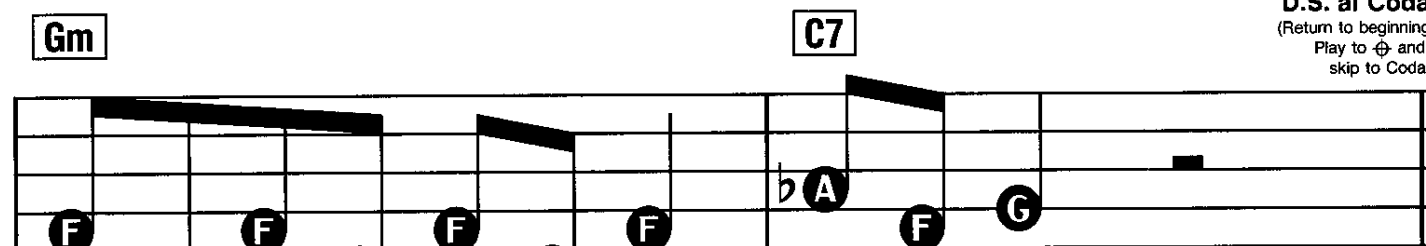
life would be so
that would be so



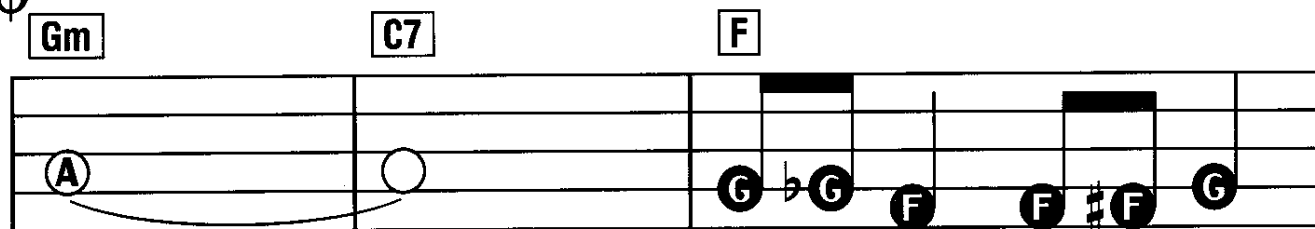
nice _____ if one day I'd find _____ some - one who would

D.S. al Coda

(Return to beginning
Play to  and
skip to Coda)

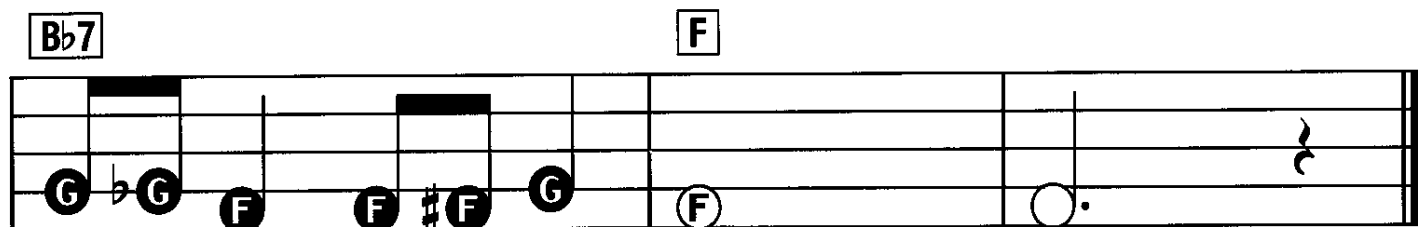


take my hand and sam - ba thru life with me.

CODA

nice. _____

Should it be you and me



_____ would be nice

Watch What Happens

Song Select No. 15

Automatic Introduction

English Words by Norman Gimbel
Music by Michel Legrand

Let One some - one _____
some - one _____

start who be - liev - ing in in your you. eyes
can look in your eyes

Let and him see hold in - out to his your

hand. heart
Let Let him touch you and watch what hap - pens.

hap - pens. Cold, No I won't be - lieve your

heart is cold. _____ May - be just a - fraid _____

to be bro - ken a - gain.

Let some - one with a deep love to give

Give that deep love to you and what ma - gic you'll

see; Let some - one give his heart, Some -

Some -

Tango Of Roses

Words by Mariorie Harper
Music by Vittorio Mascheroni

Song Select No. 16

Automatic Introduction

Am

See

Dm E Am Dm E

how red the ros - es grow, As though they try to

Am N.C. E

show _____ the ve - ry fi - re, The same de -

Am E7

sire, _____ that you in - spire _____ when you ap -

Am **Dm**

pear. Ros - es re - flect my

Am **E** **Am**

glad - ness, They share my sad - ness when you're not near.

Dm **Am** **E**

They are the em - blems of pas - sion, ro - mance and

A N.C.

love.

A

love.

E

vo - tion. _____ Ros - es seem _____

A

_____ to mir - ror my e - mo - tion. _____

D

Yet with - in _____ the dream - y tan - go of the

A **E7**

ros - es, My heart so will - ing - ly dis - clos - es;

A

Love will out - live the rose. _____

